

# CONTINUING EDUCATION



**Make an Impression.**  
Printmaking. — p. 7

**Back-to-school time.**  
CU Complete. — p. 9

**Moving with the Times.**  
Dance and Popular  
Culture. — p. 12

**Live your dream.**  
Post-Bac. Health  
Prof. Program — p. 19

**Explore more online:**  
Visit [conted.colorado.edu](http://conted.colorado.edu) for course updates.

## SPRING '15



# Be Creative.

Design a flexible schedule with online and evening courses.

**Be Boulder.**



Continuing Education  
UNIVERSITY OF COLORADO BOULDER

# CONTENTS

## 9 CU Complete

A service designed to help former CU-Boulder students complete their degrees.

## 17 Applied Music

Private and group music lessons on a variety of instruments for academic credit.

## 17 Speech, Language, and Hearing Sciences

Online academic credit courses to fulfill prerequisites for certificates and degree programs.

## 18 Additional Credit Programs

- ACCESS (Available Credit Courses for Eligible Special Students)
- High School Concurrent
- Individualized Instruction
- Finishing Your Degree at CU

## 19 Post-Baccalaureate Health Professions Program

For recent college graduates or professionals seeking a career change.

## 20 Summer Session

A unique opportunity to earn academic credit, satisfy your curiosity, and meet major or minor requirements.

## 21 CU on the Weekend

Weekend courses highlighting CU-Boulder faculty research and creative work.

## 28 Student Resources

## 2 Evening Credit

University of Colorado credit courses offered weekdays after 5 pm through the departments of communication, English, mathematics, psychology, sociology, Spanish, and more.

## 10 Online Credit

Online University of Colorado credit courses— an excellent solution for disciplined independent learners.

## 22 International English

English as a second language programs for international students, community residents, or interested visitors from other countries.

## 24 Science Discovery

An experience-based educational outreach program designed to stimulate scientific interest, understanding, and literacy among Colorado's youth, teachers, and families.

## 26 Outreach

Projects highlighting faculty research, creative work, and teaching aimed at audiences outside the university community.



**Let's get connected.**

Course descriptions and enrollment information at [conted.colorado.edu](http://conted.colorado.edu)



Printed on Forest Stewardship Council paper ensuring the highest standards of environmental and social responsibility. Share your catalog with friends, and recycle all appropriate materials. Thank you.

Film Analysis for Non-Majors

ANDREW YOUNG

“Media is not just on a screen, it’s

**EVERYWHERE.**

It’s not just narrative or story, it’s also our daily lives.”

“Although we watch movies and talk about what is going on in them, I am teaching my students how to be more savvy media consumers in general,” says Andrew, a film studies instructor and filmmaker. “Some of how we are influenced by media is explicit, like watching TV, but others are more latent, like the ever-present phone in our pocket. The different media options available to us are merging and we need to develop media literacy to understand how we interact with and are influenced by them on a daily basis.”

## TAKE CREDIT FOR LEARNING

**Use our evening courses to make significant progress toward a degree or to acquire a career-advancing skill without taking time away from the rest of your busy life. You can start a degree, finish one, enhance your employability, experiment with returning to college, or supplement your current on-campus course load. It all depends on you.**

**Evening credits are just like those awarded on main campus. Grades count toward your GPA. And your transcript doesn’t distinguish between evening and daytime courses. Talk with one of our advisors today.**

### Eligibility

All you need is a high school diploma or GED. Individuals with University of Colorado service indicators (financial holds) may not enroll.

If you are considering applying to CU-Boulder as a degree student in the future, meet with a Continuing Education academic advisor to learn about your academic options. We want to help you be successful at the University of Colorado and meet your academic goals. Requirements for admission vary by your

status (freshman, transfer, second-degree student), so set up an academic advising appointment before you enroll in classes. If you are under age 22, please bring copies of your high school transcript, any college transcripts, and your SAT or ACT scores to your advising appointment. For more information about admission procedures and registration status, call Continuing Education at 303-492-5148.

### Adding and/or Dropping Courses

Complete information on enrolling and dropping, along with deadlines, can be found on pages 4-5. If you don’t officially withdraw from a course, you may receive a grade of *F* for that course and you may be liable for any tuition and fees.

If you do not attend your course regularly during the first week through the last day to drop (see pages 4-5), you *may* be administratively dropped. Check with your instructor or contact Continuing Education for additional information.

### Tuition

Tuition for Evening Credit is assessed in addition to any tuition paid on campus (resident or nonresident).

Tuition is determined by your residency.

#### In-state tuition

\$290 per credit hour.

#### Out-of-state tuition

Three credits or less is \$1,138 per credit hour.  
Four or more credits is \$15,705.

## EVENING CREDIT



The Division will charge the in-state tuition rate for Evening Credit when a nonresident degree student pays full out-of-state tuition through the Boulder campus and then enrolls for additional Evening Credit courses. A full tuition schedule is available at [conted.colorado.edu/resources](http://conted.colorado.edu/resources).

Some courses requiring special equipment or materials may be slightly higher.

### Residency

If you have lived in Colorado for the past 12 months, you may be eligible for in-state tuition rates although you may be asked for documentation. For additional information, please contact our classification coordinator at 303-492-5148.

### Final Exams and Grades


Final exams are held the last day of the class. See the list of courses by start date on pages 6-8. Final grades will be available on [mycuinfo.colorado.edu](http://mycuinfo.colorado.edu) approximately two weeks after a class ends. If you need an official transcript, visit the registrar's office website at [www.colorado.edu/registrar](http://www.colorado.edu/registrar) for information.

### Faculty and Staff Discounts

University of Colorado faculty and staff on at least a half-time, permanent appointment and retired faculty and staff may enroll in classes at a 50% tuition discount. Please provide proof of status when you enroll.

### Student Fees

Evening Credit students have the option of paying student fees for use of the Recreation Center, Wardenburg Student Health Center, etc., including an RTD bus pass. Visit [conted.colorado.edu/resources](http://conted.colorado.edu/resources) for information.



**Let's get connected.**

Course descriptions and enrollment information at [conted.colorado.edu](http://conted.colorado.edu)

## IMPORTANT DATES – SPRING 2015

### All Sessions

**November 3:** Boulder Evening registration through MyCUInfo at [mycuinfo.colorado.edu](http://mycuinfo.colorado.edu) begins 7 am-midnight. Registration is also available by mail, fax, or in person at the Division of Continuing Education, 1505 University Avenue, 8 am-5 pm Monday through Friday.

**January 19:** University closed.

**January 23:** Deadline to apply for Nontraditional Student Scholarship.

**March 23-27:** Spring break. No classes.

### FULL SESSION

**January 20:** Full Session classes begin.

**January 27:** 11:59 pm deadline to enroll online using MyCUInfo at [mycuinfo.colorado.edu](http://mycuinfo.colorado.edu) (5 pm deadline in person) in Full Session classes, or add your name to a wait list.

**January 30:** Deadline to petition for in-state tuition classification for Full Session.

**February 3:** Deadline (11:59 online using MyCUInfo at [mycuinfo.colorado.edu](http://mycuinfo.colorado.edu) or 5 pm in person) to request *pass/fail* status or drop with a 100% refund. Withdrawals from Full Session classes after this date will appear as a *W* on your academic record.

**February 5:** Tuition for Full Session due.\*

**February 17:** Deadline (11:59 pm online using MyCUInfo at [mycuinfo.colorado.edu](http://mycuinfo.colorado.edu), 5 pm in person, or email to [ceregistration@colorado.edu](mailto:ceregistration@colorado.edu)) to withdraw from Full Session classes with a 60% refund.

**March 3:** Deadline (11:59 pm online using MyCUInfo at [mycuinfo.colorado.edu](http://mycuinfo.colorado.edu), 5 pm in person, or email to [ceregistration@colorado.edu](mailto:ceregistration@colorado.edu)) to withdraw from Full Session classes with a 40% refund.

**April 6:** Deadline (11:59 pm online using MyCUInfo at [mycuinfo.colorado.edu](http://mycuinfo.colorado.edu), 5 pm in person, or email to [ceregistration@colorado.edu](mailto:ceregistration@colorado.edu)) to withdraw from Full Session classes without instructor's signature.

Instructor's signature and petition documenting extenuating circumstances required after this date to withdraw from Full Session classes. Petition forms available at Continuing Education.

**April 24:** 5 pm deadline to add Full Session classes with instructor's signature.

Petition documenting extenuating circumstances required after this date to add Full Session classes. Petition forms available at Continuing Education.

**April 27-30:** Last day of classes and final exams for most Full Session classes.

### 10-WEEK SESSION

**February 2:** 10-Week Session classes begin.

**February 5:** Tuition for 10-Week Session due.\*

**February 9:** 11:59 pm deadline to enroll online using MyCUInfo (5 pm deadline in person) in 10-Week Session classes, or add your name to a wait list.

**February 12:** Deadline to petition for in-state tuition classification for 10-Week Session.

**February 16:** Deadline (11:59 online using MyCUInfo at [mycuinfo.colorado.edu](http://mycuinfo.colorado.edu) or 5 pm in person) to request *pass/fail* status or drop with a 100% refund. Withdrawals from 10-Week Session classes after this date will appear as a *W* on your academic record.

**February 23:** Deadline (11:59 pm online using MyCUInfo at [mycuinfo.colorado.edu](http://mycuinfo.colorado.edu), 5 pm in person, or email to [ceregistration@colorado.edu](mailto:ceregistration@colorado.edu)) to withdraw from 10-Week Session classes with a 60% refund.

**March 2:** Deadline (11:59 pm online using MyCUInfo at [mycuinfo.colorado.edu](http://mycuinfo.colorado.edu), 5 pm in person, or email to [ceregistration@colorado.edu](mailto:ceregistration@colorado.edu)) to withdraw from 10-Week Session classes with a 40% refund.

**March 20:** Deadline (11:59 pm online using MyCUInfo at [mycuinfo.colorado.edu](http://mycuinfo.colorado.edu), 5 pm in person, or email to [ceregistration@colorado.edu](mailto:ceregistration@colorado.edu)) to withdraw from 10-Week Session classes without instructor's signature.

Instructor's signature and petition documenting extenuating circumstances required after this date to withdraw from 10-Week Session classes. Petition forms available at Continuing Education.

**April 10:** 5 pm deadline to add 10-Week Session classes with instructor's signature.

Petition documenting extenuating circumstances required after this date to add 10-Week Session classes. Petition forms are available at Continuing Education.

**April 13-16:** Last day of classes and final exams for 10-Week Session classes.

### SESSION 1

**January 20:** Session 1 classes begin.

**January 22:** 11:59 pm deadline to enroll online using MyCUInfo at [mycuinfo.colorado.edu](http://mycuinfo.colorado.edu) (5 pm deadline in person) in Session 1 classes, or add your name to a wait list.

**January 23:** Deadline to petition for in-state tuition classification for Session 1 classes.

**January 27:** Deadline (11:59 online using MyCUInfo at [mycuinfo.colorado.edu](http://mycuinfo.colorado.edu) or 5 pm in person) to request *pass/fail* status or drop with a 100% refund. Withdrawals from Session 1 classes after this date will appear as a *W* on your academic record.

**February 3:** Deadline (11:59 pm online using MyCUInfo at [mycuinfo.colorado.edu](http://mycuinfo.colorado.edu), 5 pm in person, or email to [ceregistration@colorado.edu](mailto:ceregistration@colorado.edu)) to withdraw from Session 1 classes with a 60% refund.

**February 5:** Tuition for Session 1 due.\*

**February 10:** Deadline (11:59 pm online using MyCUInfo at [mycuinfo.colorado.edu](http://mycuinfo.colorado.edu), 5 pm in person, or email to [ceregistration@colorado.edu](mailto:ceregistration@colorado.edu)) to withdraw from Session 1 classes with a 40% refund.

**February 16:** Deadline (11:59 online using MyCUInfo at [mycuinfo.colorado.edu](http://mycuinfo.colorado.edu), 5 pm in person, or email to [ceregistration@colorado.edu](mailto:ceregistration@colorado.edu)) to withdraw from Session 1 classes without instructor's signature.

Instructor's signature and petition documenting extenuating circumstances required after this date to withdraw from Session 1 classes. Petition forms available at Continuing Education.

\*Payment due dates are the fifth of every month. If the fifth falls on a weekend or holiday, payment in person or by mail is due in our office by close of business on the last business day before the fifth. Postmarks are not honored. If paying online, payment is due before midnight on the fifth. If enrolled in a payment plan, automatic deduction will occur the first business day following the fifth.

## EVENING CREDIT

**February 27:** 5 pm deadline to add Session 1 classes with instructor's signature.

Petition documenting extenuating circumstances required after this date to add Session 1 classes. Petition forms available at Continuing Education.

**March 5:** Last day of classes and final exams for Session 1.

### SESSION 2

**March 9:** Session 2 classes begin.

**March 11:** 11:59 pm deadline to enroll online using MyCUInfo at mycuinfo.colorado.edu (5 pm deadline in person) in Session 2 classes, or add your name to a wait list.

**March 12:** Deadline to petition for in-state tuition classification for Session 2 classes.

**March 16:** Deadline (11:59 online using MyCUInfo at mycuinfo.colorado.edu or 5 pm in person) to request *pass/fail* status or drop with a 100% refund. Withdrawals from Session 2 classes after this date will appear as a *W* on your academic record.

**March 30:** Deadline (11:59 online using MyCUInfo at mycuinfo.colorado.edu, 5 pm in person, or email to ceregistration@colorado.edu) to withdraw from Session 2 classes with a 60% refund.

**April 5:** Tuition for Session 2 due.\*

**April 6:** Deadline (11:59 online using MyCUInfo at mycuinfo.colorado.edu, 5 pm in person, or email to ceregistration@colorado.edu) to withdraw from Session 2 classes with a 40% refund.

**April 17:** Deadline (11:59 pm online using MyCUInfo at mycuinfo.colorado.edu, 5 pm in person, or email to ceregistration@colorado.edu) to withdraw from Session 2 classes without instructor's signature.

Instructor's signature and petition documenting extenuating circumstances required after this date to withdraw from Session 2 classes. Petition forms available at Continuing Education.

**April 24:** 5 pm deadline to add Session 2 classes without instructor's signature.

Petition documenting extenuating circumstances required after this date to add Session 2 classes. Petition forms available at Continuing Education.

**April 30:** Last day of classes and final exams for Session 2 classes.



### Taylor Froelich

Marriage & Family in US Society

**“I recognize the importance of marriage and the influence it has on our society. Each person in class came from different backgrounds and family styles, and it was insightful to see how their personal experience effected their decisions and their views on marriage.”**

## COURSES BY START DATE

Course No.–Hours	Sec.	Class No.	Times	Course Title	Core	In-state Tuition
------------------	------	-----------	-------	--------------	------	------------------

### FULL SESSION

#### Monday, Wednesday, and Friday courses begin January 12 and end May 1

FNCE 2820-3	300E	12-12:50 pm	35216	Introduction to Personal Financial Planning	none	\$870
FNCE 2820-3	301E	1-1:50 pm	35217	Introduction to Personal Financial Planning	none	\$870

#### Tuesday and Thursday course begins January 13 and ends April 30

ARTS 1010-3	300E	5-8 pm	35157	Introduction to Studio Art	none	\$1,095
-------------	------	--------	-------	----------------------------	------	---------

#### Monday courses begin January 26 and end April 27

BCOR 2300-3	300E	5:30-7:30 pm	35173	Adding Value with Management	business core	\$870
CLAS 1051-3	300E	6-8 pm	35180	The World of the Ancient Greeks	historical context	\$870
COMM 3210-3	300E	6-9 pm	35192	Human Communication Theory	none	\$885
ECON 2010-4	300E	6-8 pm	35195	Principles of Microeconomics	contemporary societies	\$1,160
FILM 3002-3	300E	6-9 pm	35213	Major Film Movements: Australia/New Zealand Cinema	none	\$960
HIST 1015-3	300E	6-8 pm	35223	History of the United States to 1865	United States context	\$870
MUEL 1832-3	300E	6-8 pm	35207	Appreciation of Music	literature and the arts	\$905
PSYC 2012-3	300E	6-8 pm	35188	Biological Psychology	natural science	\$870
PSYC 3456-3	300E	6-8 pm	35184	Psychology of Personality	none	\$870
THTR 1009-3	300E	6-9 pm	35160	Introduction to Theatre	literature and the arts	\$915
THTR 3011-3	300E	6-9 pm	35158	Development of the American Musical Theatre	literature and the arts	\$915
WRWG 3020-3	300E	6-7:30 pm	35148	Topics in Writing: Essay to Blog: Exploring Nonfiction	written communication	\$880

#### Monday and Wednesday courses begin January 21 and end April 29

ARTS 1875-3	300E	6-9 pm	35162	Ceramics for Nonmajors	none	\$1,095
SPAN 1010-5	300E	5:30-7:30 pm	35174	Beginning Spanish 1	foreign language	\$1,470
SPAN 1020-5	300E	6-8 pm	35172	Beginning Spanish 2	foreign language	\$1,470
SPAN 1150-5	300E	5:30-7:30 pm	35168	Intensive First Year Spanish	foreign language	\$1,470



Course descriptions are available at [conted.colorado.edu/evening-credit](http://conted.colorado.edu/evening-credit)



## EVENING CREDIT

Course No.–Hours	Sec.	Class No.	Times	Course Title	Core	In-state Tuition
<b>Tuesday courses begin January 20 and end April 28</b>						
ANTH 2020-3	300E	6:30-8:30 pm	35147	Introduction to Physical Anthropology 2	natural science	\$870
ANTH 4420-3	300E	6-8 pm	35151	Archaeology of Ancient Egypt	none	\$870
ARTS 2433-3	300E	11 am-3 pm	35236	Beginning Alternative Printmaking	none	\$1,095
ARTS 3433-3	300E	11 am-3 pm	35237	Alternative Printmaking 1	none	\$1,095
ARTS 4433-3	300E	11 am-3 pm	35283	Alternative Printmaking 2	none	\$1,095
CESR 4821-3	300E	5:30-8:30 pm	35176	Values and Power of the Consumer in Society	none	\$870
COMM 1300-3	300E	6-9 pm	35189	Public Speaking	none	\$885
ECON 2020-4	300E	6-9 pm	35198	Principles of Macroeconomics	contemporary societies	\$1,160
MATH 1012-3	300E	6-8 pm	35212	Quantitative Reasoning and Mathematical Skills	quantitative reasoning and mathematical skills	\$870
MATH 2510-3	300E	6-9 pm	35209	Introduction to Statistics	none	\$870
MUEL 2852-3	300E	6-9 pm	35202	Music of the Rock Era	literature and the arts	\$905
PHIL 1000-3	300E	6-8 pm	35201	Introduction to Philosophy	ideals and values	\$870
SPAN 2110-3	300E	6-8 pm	35166	Second-Year Spanish 1	foreign language	\$890
WRTG 1150-3	301E	6-8 pm	35152	First-Year Writing and Rhetoric	written communication	\$895

### Tuesday and Thursday course begins January 20 and ends April 30

MATH 1300-5	300E	6-8:30 pm	35211	Calculus 1	quantitative reasoning and mathematical skills	\$1,450
-------------	------	-----------	-------	------------	--	---------

### Wednesday courses begin January 21 and end April 29

CLAS 1061-3	300E	6-8 pm	35181	The Rise and Fall of Ancient Rome	historical context	\$870
EBIO 1220-3	300E	6-8 pm	35194	General Biology 2	natural science	\$870
ENGL 1191-3	300E	6:30-9:30 pm	35199	Introduction to Creative Writing	none	\$882
GEOG 1982-3	300E	6-9 pm	35220	World Regional Geography	none	\$870
GEOG 3251-3	300E	6-9 pm	35222	Mountain Geography	none	\$870
HIST 1025-3	300E	6-8 pm	35225	History of the United States since 1865	United States context	\$870
PHIL 1600-3	300E	6-8 pm	35197	Philosophy and Religion	ideals and values	\$870
PSYC 1001-3	300E	6:30-9:30 pm	35190	General Psychology	none	\$870
SOCY 1001-3	300E	6-8 pm	35182	Introduction to Sociology	contemporary societies	\$870
SOCY 2031-3	300E	5:30-7:30 pm	35177	Social Problems	ideals and values	\$870
WRTG 1150-3	302E	6-8 pm	35153	First-Year Writing and Rhetoric	written communication	\$895

### Thursday courses begin January 22 and end April 30

ANTH 3000-3	300E	6:30-8:30 pm	35149	Primate Behavior	natural science	\$870
BCOR 1015-3	300E	5:30-8:30 pm	35167	The World of Business	business core	\$870
ENGL 3000-3	300E	6-8 pm	35206	Shakespeare for Nonmajors	literature and the arts	\$870
FILM 1002-3	300E	6-8:30 pm	35210	Film Analysis for Non-Majors	none	\$960
HIST 1020-3	300E	6-9 pm	35224	Western Civilization 2: 16th Century to the Present	historical context	\$870
MATH 1011-3	300E	6-9 pm	35214	College Algebra	quantitative reasoning and mathematical skills	\$870
MUEL 2752-3	300E	6-8 pm	35205	Music in American Culture	United States context	\$905
PHIL 1100-3	300E	6-8 pm	35200	Ethics	ideals and values	\$870
PSYC 2145-3	300E	6-8 pm	35186	Introductory Cognitive Psychology	none	\$870
WMST 2000-3	300E	6-8 pm	35156	Introduction to Feminist Studies	human diversity	\$870

**COURSES BY START DATE** (continued)

Course No.–Hours	Sec.	Class No.	Times	Course Title	Core	In-state Tuition
------------------	------	-----------	-------	--------------	------	------------------

**SESSION 1****Tuesday and Thursday course begins January 20 and ends March 5**

GEOG 1001-4	100E	6-8 pm	35218	Environmental Systems 1: Climate and Vegetation	natural science	\$1,160
-------------	------	--------	-------	---	-----------------	---------

**10-WEEK SESSION****Monday courses begin February 2 and end April 13**

ENGL 1600-3	400E	6-9 pm	35204	Masterpieces of American Literature	literature and the arts	\$870
SOCY 3151-3	400E	6-8 pm	35175	Self in Modern Society	United States context or ideals and values	\$870

**Tuesday courses begin February 3 and end April 14**

ARTH 1300-3	400E	6-8 pm	35154	History of World Art 1	literature and the arts	\$945
ENGL 3060-3	400E	6:30-9:30 pm	35208	Modern and Contemporary Literature for Nonmajors	literature and the arts	\$870
GEOG 1992-3	400E	6-8 pm	35221	Human Geographies	none	\$870
PSCI 2223-3	400E	6-8 pm	35191	Introduction to International Relations	contemporary societies	\$870
WRWG 3020-3	400E	6-7:30 pm	35150	Topics in Writing: Language, Power, Perception	written communication	\$880

**Wednesday courses begin February 4 and end April 15**

CLAS 4130-3	400E	6-9 pm	35187	Greek and Roman Comedy	literature and the arts	\$870
IPHY 2420-3	400E	6-8 pm	35215	Nutrition for Health and Performance	natural science	\$870
MUEL 2772-3	400E	6-8 pm	35203	World Musics: Africa/Europe/Americas	human diversity	\$905
RLST 2500-3	400E	6-8 pm	35183	Religions in the United States	United States context or ideals and values	\$870
SOCY 1016-3	400E	6-8 pm	35179	Sex, Gender, and Society 1	human diversity	\$870

**Thursday courses begin February 5 and end April 16**

ARTH 3039-3	400E	6-8:30 pm	35155	Greek Art and Archaeology	literature and the arts	\$870
CLAS 3039-3	400E	6-8:30 pm	35185	Greek Art and Archaeology	literature and the arts	\$870
PSCI 1101-3	400E	6-8 pm	35193	The American Political System	contemporary societies or United States context	\$870

**SESSION 2****Monday course begins March 9 and ends April 27**

ANTH 1160-3	200E	6-8:30 pm	35141	The Ancient Egyptian Civilization	human diversity	\$870
-------------	------	-----------	-------	-----------------------------------	-----------------	-------

**Tuesday and Thursday course begins March 10 and ends April 30**

GEOG 1011-4	200E	6-8 pm	35219	Environmental Systems 2: Landscapes and Water	natural science	\$1,160
-------------	------	--------	-------	---	-----------------	---------



Course descriptions are available at  
[conted.colorado.edu/evening-credit](http://conted.colorado.edu/evening-credit)

## CU COMPLETE SERVICE

### Jillynne Jensen

“I found CU Complete when I was looking for work at forty and realized I had to have a degree to qualify. You see, I left home when I was 16 and ended up having to leave school to get a job and take care of myself. I worked in manual labor for most of my life, but writing is something I have always loved to do. Now I have a degree in both English/Creative Writing and Sociology. I even graduated summa cum laude in English as a result of my 3.94 GPA and the novel I wrote for my honors thesis, and ‘with Distinction’ in Sociology.”



### NOW IS THE TIME TO COMPLETE YOUR DEGREE.

Your degree is closer than you think. CU Complete offers the academic guidance and potential financial support to achieve the CU-Boulder degree that you started.

#### Guiding Former Students Toward Completing Their Degrees

CU Complete is a service designed to help former CU-Boulder students complete their degrees at CU.

Our advisors understand the challenges facing adult students and can help you create a path toward completing your degree.


If you are ready to work toward completing your degree, please fill out the intake form available at [cucomplete.colorado.edu](http://cucomplete.colorado.edu).

#### CU Complete Scholarship

Continuing Education has allocated scholarship funds to assist students who are trying to finish their CU bachelor's degree.

More information is available at [cucomplete.colorado.edu](http://cucomplete.colorado.edu).

*(Continuing Education congratulates Jillynne on being the recipient of the 2014 University Professional and Continuing Education Association (UPCEA) Central Region Nontraditional Student of the Year Award.)*



**Let's get connected.**  
Course descriptions and enrollment information at [conted.colorado.edu](http://conted.colorado.edu)

Shakespeare for Nonmajors

KRYSTAL McMILLEN

“I help my students find other applications in their twenty-first century lives for the

**SKILLS**

they learn in an English class.”

“Reading Shakespeare is important, don’t get me wrong, but I also want to help students become more savvy consumers of the information constantly surrounding them, and gain the hard and soft skills employers are looking for,” says Krystal, who is working on a digital pedagogy grant. “Many of my students are either about to enter the professional world or are already working in it, and they are taking an online class for a reason. I want to respect that reason by giving them real-world skills.”

**THE ULTIMATE IN FLEXIBILITY WITH CU QUALITY.**

You call the shots – by deciding when, where, and how you learn.

Online Credit lets you start your study any time of the year. You can complete courses over the Internet; choose from self-paced classes that you complete according to your calendar; or term-based classes that follow the semester calendar. Online classes allow rich interaction with your instructor and other students.

Think of the possibilities. You can earn extra credit toward your degree, enhance and develop your job skills, prepare for a career change, or just satisfy your curiosity – all at your own convenience.

## ONLINE CREDIT



So, it's up to you to challenge yourself and to decide how you want to take a course. Complete course descriptions and additional information are available at [conted.colorado.edu/online-credit](http://conted.colorado.edu/online-credit) or call 303-492-5148.

If you are considering applying to CU-Boulder as a degree student in the future, meet with a Continuing Education academic advisor to learn about your academic options. We want to help you be successful at the University of Colorado and meet your academic goals. Requirements for admission vary by your status (freshman, transfer, second-degree student), so set up an academic advising appointment before you enroll in classes. If you are under age 22, please bring copies of your high school transcript, any college transcripts, and your SAT or ACT scores to your advising appointment. Advising appointments can be held by phone or in person. To make an appointment online and explore your options, visit [conted.colorado.edu/resources](http://conted.colorado.edu/resources). For more information about admission procedures and registration status, call Continuing Education at 303-492-5148.

### Faculty and Staff Discounts

University of Colorado faculty and staff on at least a half-time appointment are eligible for a 20% discount on most courses with the exception of the Writing and Rhetoric courses.

### Course Information

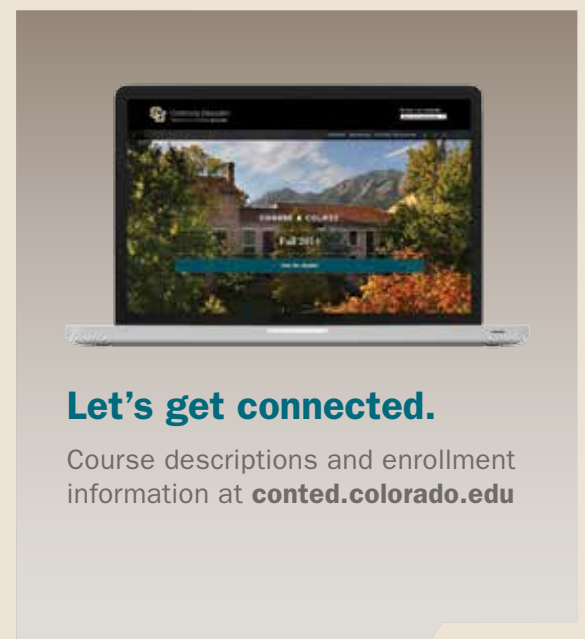
Administered under the direction of the Online Credit Program, these University of Colorado credit classes are approved by the individual departments.

### Term-based Courses

Term-based courses follow a fixed calendar so that all students will be on the same schedule and can regularly interact with each other online.

### Self-paced Courses

Self-paced courses allow you up to 6 months to finish and can be extended for another 6 months. All course communications are conducted online. Many of these courses involve online interaction among students and a broad range of web activities.



### Let's get connected.

Course descriptions and enrollment information at [conted.colorado.edu](http://conted.colorado.edu)

### TERM-BASED ONLINE COURSES

These courses are offered on a term basis in order to provide rich interaction with your instructor and the other students in the course. The courses follow a calendar of assignments and examinations. Note the term dates carefully. These courses are conducted as virtual seminars, requiring significant amounts of writing and significant amounts of interaction with the instructor and other students. Plan on 90 hours of work in addition to approximately 45 hours with the study guide.

### TERM-BASED COURSES BY START DATE

Course No.–Hours	Section	Class No.	Course Title	Core	Tuition
<b>Full Session – 14 weeks: January 20 – May 1</b>					
ANTH 2010-3	581	35051	Introduction to Physical Anthropology 1	natural science	\$1,098
ANTH 3000-3	581	35052	Primate Behavior	natural science	\$1,098
ANTH 4020-3	581	35053	Explorations in Anthropology: Digital Anthropology	none	\$1,098
ARTS 1012-3	581	35064	Drawing for Non-Majors	none	\$1,098
ATLS 3519-3	581	35074	Special Topics in Technology, Arts, and Media: Universal Design for Digital Media	none	\$1,098
COMM 2400-3	581	35081	Discourse, Culture, and Identities	human diversity	\$1,098
COMM 2500-3	581	35083	Interpersonal Communication	none	\$1,098
COMM 3310-3	581	35085	Principles and Practices of Argumentation	none	\$1,098
COMM 3320-3	581	35088	Persuasion in Society	none	\$1,098
COMM 3610-3	581	35089	Communication, Technology, and Society	none	\$1,098
DNCE 1017-3	581	35091	Dance and Popular Culture	literature and the arts	\$1,098

### IMPORTANT DATES FOR TERM-BASED ONLINE COURSES

#### Spring 2015

	Full Session (14 weeks)	10-Week Session (10 Weeks)	Session 1 (7 weeks)	Session 2 (7 weeks)
Registration Begins	November 3	November 3	November 3	November 3
Course Begins	January 20	February 2	January 20	March 9
11:59 pm deadline to enroll online using MyCUInfo (5 pm deadline in person) or add your name to a wait list	January 27	February 9	January 22	March 11
11:59 pm deadline using MyCUInfo (5 pm in person) to request pass/fail or to drop with a 100% refund*	February 3	February 16	January 27	March 16
Tuition Due**	February 5	February 5	February 5	April 5
11:59 pm deadline to withdraw using MyCUInfo (5 pm in person or via email to ceregistration@colorado.edu) with a 60% refund	February 17	February 23	February 3	March 30
11:59 pm deadline to withdraw using MyCUInfo (5 pm in person or via email to ceregistration@colorado.edu) with a 40% refund	March 3	March 2	February 10	April 6
11:59 pm deadline to withdraw using MyCUInfo (5 pm in person or via email to ceregistration@colorado.edu) without any signatures	April 6	March 20	February 16	April 17
5 pm deadline to add with instructor's signature. Petition documenting extenuating circumstances required after this date to add courses. Petition forms available at Continuing Education	April 24	April 10	February 27	April 24
Course Ends	May 1	April 17	March 6	May 1

\*Withdrawals from classes after this date will appear as a W on your academic record.

\*\*Payment due dates are the fifth of every month. If the fifth falls on a weekend or holiday, payment in person or by mail is due in our office by close of business on the last business day before the fifth. Postmarks are not honored. If paying online, payment is due before midnight on the fifth. If enrolled in a payment plan, automatic deduction will occur the first business day following the fifth.

## ONLINE CREDIT

Course No.–Hours	Section	Class No.	Course Title	Core	Tuition
EBIO 1030-3	581	35094	Biology: A Human Approach 1	natural science	\$1,098
EBIO 1210-3	581	35096	General Biology 1	natural science	\$1,098
EBIO 1220-3	581	35142	General Biology 2	natural science	\$1,098
ENGL 1600-3	581	35140	Masterpieces of American Literature	literature and the arts	\$1,098
ENGL 1800-3	581	35139	American Ethnic Literatures	human diversity	\$1,098
ENGL 3000-3	581	35136	Shakespeare for Nonmajors	literature and the arts	\$1,098
ENGL 3000-3	582	35137	Shakespeare for Nonmajors	literature and the arts	\$1,098
ENGL 3060-3	581	35134	Modern and Contemporary Literature	literature and the arts	\$1,098
ENGL 3060-3	582	35135	Modern and Contemporary Literature	literature and the arts	\$1,098
ENGL 3563-3	581	35133	Shakespeare	none	\$1,098
ENGL 4224-3	581	35132	Modern British and Irish Novel	none	\$1,098
ENGL 4665-3	581	35131	Studies in American Literature after 1900	none	\$1,098
GEOG 1001-4	581	35144	Environmental Systems 1: Climate and Vegetation	natural science	\$1,464
GEOG 1011-4	581	35145	Environmental Systems 2: Landscapes and Water	natural science	\$1,464
GEOG 1982-3	581	35143	World Regional Geography	none	\$1,098
GEOG 1992-3	581	37547	Human Geographies	none	\$1,098
GEOG 4501-3	581	35129	Water Resources and Water Management of Western United States	none	\$1,098
GEOG 5501-3	581	35130	Water Resources and Water Management of Western United States	none	\$1,398
GEOL 1010-3	581	35128	Introduction to Geology	natural science	\$1,098
HIST 1010-3	581	35127	Western Civilization 1: From Antiquity to the 16th Century	historical context	\$1,098
HIST 1015-3	581	35126	History of the United States to 1865	United States context	\$1,098
HIST 1020-3	581	35125	Western Civilization 2: 16th Century to the Present	historical context	\$1,098
HIST 1025-3	581	35124	History of the United States since 1865	United States context	\$1,098
HIST 1123-3	581	35123	Introduction to British History since 1660	historical context	\$1,098
HIST 2100-3	581	35122	Revolution in History: The Haitian Revolution of 1791	historical context	\$1,098
IPHY 1950-3	581	37296	Introduction to Scientific Writing in Integrative Physiology	written communication	\$1,098
IPHY 2420-3	581	35120	Nutrition for Health and Performance	natural science	\$1,098
IPHY 2420-3	582	35121	Nutrition for Health and Performance	natural science	\$1,098
IPHY 3430-3	581	35119	Introduction to Human Physiology	none	\$1,098
JOUR 1001-3	581	35118	Contemporary Media Analysis	none	\$1,098
JOUR 4301-3	581	35116	Media Ethics	none	\$1,098
JOUR 5301-3	581	35117	Media Ethics	none	\$1,398
MATH 1011-3	581	35115	College Algebra	quantitative reasoning and mathematical skills	\$1,098
MATH 1012-3	581	35114	Quantitative Reasoning and Mathematical Skills	quantitative reasoning and mathematical skills	\$1,098
MATH 1071-3	581	35113	Finite Mathematics for Social Science and Business	quantitative reasoning and mathematical skills	\$1,098
MATH 1081-3	581	35112	Calculus for Social Science and Business	quantitative reasoning and mathematical skills	\$1,098
MATH 1150-4	581	35111	Precalculus Mathematics	quantitative reasoning and mathematical skills	\$1,464
MATH 2510-3	581	35110	Introduction to Statistics	none	\$1,098
MUEL 2752-3	581	35109	Music in American Culture	United States context	\$1,098
NRSC 4032-3	581	35107	Neurobiology of Learning and Memory	none	\$1,098
NRSC 5032-3	581	35108	Neurobiology of Learning and Memory	none	\$1,398



Course descriptions are available at  
[conted.colorado.edu/online-credit](https://conted.colorado.edu/online-credit)

**TERM-BASED COURSES BY START DATE** (continued)

Course No.-Hours	Section	Class No.	Course Title	Core	Tuition
------------------	---------	-----------	--------------	------	---------

**Full Session – 14 weeks: January 20 – May 1** (continued)

PHIL 1000-3	581	35106	Introduction to Philosophy	ideals and values	\$1,098
PHIL 1100-3	581	35105	Ethics	ideals and values	\$1,098
PHIL 1200-3	581	35104	Philosophy and Society	United States context or ideals and values	\$1,098
PHIL 1400-3	581	35103	Philosophy and the Sciences	natural science	\$1,098
PHIL 3140-3	581	35102	Environmental Ethics	ideals and values	\$1,098
PSCI 1101-3	581	35101	The American Political System	contemporary societies or United States context	\$1,098
PSCI 4002-3	581	35100	Western European Politics	contemporary societies	\$1,098
PSCI 4701-3	581	35099	Symbolic Politics	none	\$1,098
PSCI 4703-3	581	35097	Alternative World Futures	none	\$1,098
PSYC 3101-4	581	35095	Statistics and Research Methods in Psychology	none	\$1,464
PSYC 3303-3	581	35146	Abnormal Psychology	none	\$1,098
PSYC 4021-3	581	35093	Psychology and Neuroscience of Exercise	none	\$1,098
SOCY 1001-3	581	35084	Introduction to Sociology	contemporary societies	\$1,098
SOCY 1016-3	581	35082	Sex, Gender, and Society 1	human diversity	\$1,098
SOCY 2031-3	581	35080	Social Problems	ideals and values	\$1,098
SOCY 2077-3	581	35077	Environment and Society	ideals and values	\$1,098
SOCY 4016-3	581	35076	Sex, Gender, and Society 2	none	\$1,098
SOCY 4017-3	581	35075	Animals and Society	none	\$1,098
SOCY 4117-3	581	35073	Food and Society	none	\$1,098
WRTG 3007-3	581	35065	Writing in the Visual Arts	written communication	\$1,098
WRTG 3020-3	581	35066	Topics in Writing: Food and Culture	written communication	\$1,098
WRTG 3020-3	582	35067	Topics in Writing: Food and Culture	written communication	\$1,098
WRTG 3020-3	583	35068	Topics in Writing: Travel Writing	written communication	\$1,098
WRTG 3020-3	584	35069	Topics in Writing: Sports in American Culture	written communication	\$1,098
WRTG 3020-3	585	35070	Topics in Writing: Gender and Representation	written communication	\$1,098
WRTG 3020-3	586	35071	Topics in Writing: Environmental Writing	written communication	\$1,098
WRTG 3020-3	587	35072	Topics in Writing: Writing on Music	written communication	\$1,098
WRTG 3030-3	581	35060	Writing on Science and Society	written communication	\$1,098
WRTG 3030-3	582	35061	Writing on Science and Society	written communication	\$1,098
WRTG 3030-3	583	35062	Writing on Science and Society	written communication	\$1,098
WRTG 3030-3	584	35063	Writing on Science and Society	written communication	\$1,098
WRTG 3040-3	581	35056	Writing on Business and Society	written communication	\$1,098
WRTG 3040-3	582	35057	Writing on Business and Society	written communication	\$1,098
WRTG 3040-3	583	35058	Writing on Business and Society	written communication	\$1,098
WRTG 3040-3	584	35059	Writing on Business and Society	written communication	\$1,098

**Session 1 – 7 weeks: January 20 – March 6**

ATOC 1050-3	581	35078	Weather and the Atmosphere	natural science	\$1,098
WRTG 3090-1	581	35054	Open Topics in Writing: Advanced: Digital Literacies	none	\$366

**10-Week Session: February 2 – April 17**

ENGL 1500-3	581	35098	Masterpieces of British Literature	literature and the arts	\$1,098
ENGL 3000-3	583	35138	Shakespeare for Nonmajors	literature and the arts	\$1,098

**Session 2 – 7 weeks: March 9 – May 1**

ATOC 1060-3	581	35079	Our Changing Environment: El Niño, Ozone, and Climate	natural science	\$1,098
WRTG 3090-2	582	35055	Open Topics in Writing: Advanced: Digital Literacies	none	\$732



## ONLINE CREDIT

### SELF-PACED COURSES

Course No.-Hours	Section	Course Title	Core	Tuition
------------------	---------	--------------	------	---------

#### ALLIANCE FOR TECHNOLOGY, LEARNING, AND SOCIETY (ATLAS)

ATLS 3519-3	640	Special Topics in Technology, Arts, and Media: Universal Design for Digital Media	none	\$1,098
NCTM 3519	640	Universal Design for Digital Media (noncredit)	none	\$645

#### ANTHROPOLOGY

ANTH 2070-3	641	Bones, Bodies, and Disease	none	\$1,098
-------------	-----	----------------------------	------	---------

#### ART AND ART HISTORY

ARTS 1012-3	640	Drawing for Non-Majors	none	\$1,098
-------------	-----	------------------------	------	---------

#### ASTROPHYSICAL AND PLANETARY SCIENCES

ASTR 1000-3	640	The Solar System	natural science	\$1,098
-------------	-----	------------------	-----------------	---------

#### COMMUNICATION

COMM 2400-3	642	Discourse, Culture, and Identities	human diversity	\$1,098
-------------	-----	------------------------------------	-----------------	---------

#### ECONOMICS

ECON 2010-4	640	Principles of Microeconomics	contemporary societies	\$1,464
ECON 2020-4	640	Principles of Macroeconomics	contemporary societies	\$1,464
ECON 3403-3	640	International Economics and Policy	contemporary societies	\$1,098
ECON 4111-3	640	Money and Banking Systems	none	\$1,098

#### EDUCATION

EDUC 3621-3	641	Art for the Elementary Teacher	none	\$1,098
EDUC 4161-3	641	Children's Literature	none	\$1,098

#### ENGLISH

ENGL 1260-3	640	Introduction to Women's Literature	human diversity	\$1,098
ENGL 1500-3	640	Masterpieces of British Literature	literature and the arts	\$1,098
ENGL 1600-3	641	Masterpieces of American Literature	literature and the arts	\$1,098
ENGL 2655-3	641	Introduction to American Literature 1	none	\$1,098
ENGL 2665-3	641	Introduction to American Literature 2	none	\$1,098
ENGL 3000-3	641	Shakespeare for Nonmajors	literature and the arts	\$1,098
ENGL 3060-3	641	Modern and Contemporary Literature for Nonmajors	literature and the arts	\$1,098
ENGL 3116-3	640	Topics in Advanced Theory: Postmodernism	none	\$1,098

#### GEOGRAPHY

GEOG 3251-3	640	Mountain Geography	none	\$1,098
-------------	-----	--------------------	------	---------

#### GEOLOGICAL SCIENCES


GEOL 1010-3	641	Introduction to Geology	natural science	\$1,098
GEOL 1020-3	640	Introduction to Earth History	natural science	\$1,098

#### HISTORY

HIST 1010-3	641	Western Civilization 1: From Antiquity to the 16th Century	historical context	\$1,098
HIST 1015-3	640	History of the United States to 1865	United States context	\$1,098
HIST 1020-3	641	Western Civilization 2: 16th Century to the Present	historical context	\$1,098
HIST 1025-3	640	History of the United States since 1865	United States context	\$1,098

**SELF-PACED COURSES** (continued)

Course No.–Hours	Section	Course Title	Core	Tuition
<b>JOURNALISM</b>				
JOUR 3771-3	641	Media and Communication History	none	\$1,098
JOUR 4321-3	640	Media Institutions and Economics	none	\$1,098
<b>MATHEMATICS</b>				
MATH 1021-3	640	College Trigonometry	none	\$1,098
MATH 1071-3	640	Finite Mathematics for Social Science and Business	quantitative reasoning and mathematical skills	\$1,098
MATH 1081-3	640	Calculus for Social Science and Business	quantitative reasoning and mathematical skills	\$1,098
<b>PEACE AND CONFLICT STUDIES</b>				
PACS 3800-3	640	Topics in Peace and Conflict Studies	none	\$1,123
<b>PHILOSOPHY</b>				
PHIL 1100-3	640	Ethics	ideals and values	\$1,098
PHIL 3140-3	640	Environmental Ethics	ideals and values	\$1,098
<b>PSYCHOLOGY</b>				
PSYC 1001-3	641	General Psychology	none	\$1,098
PSYC 1001-3	642	General Psychology	none	\$1,098
PSYC 2012-3	641	Biological Psychology	natural science	\$1,098
PSYC 2145-3	641	Introductory Cognitive Psychology	none	\$1,098
PSYC 2606-3	640	Social Psychology	contemporary societies	\$1,098
PSYC 3101-4	640	Statistics and Research Methods in Psychology	none	\$1,464
PSYC 3303-3	640	Abnormal Psychology	none	\$1,098
PSYC 3456-3	640	Psychology of Personality	none	\$1,098
PSYC 3511-3	641	History of Psychology	none	\$1,098
PSYC 3684-3	641	Developmental Psychology	none	\$1,098
<b>SOCIOLOGY</b>				
SOCY 1001-3	640	Introduction to Sociology	contemporary societies	\$1,098
SOCY 4014-3	641	Criminology	none	\$1,098
SOCY 4086-3	641	Family and Society	none	\$1,098



Course descriptions are available at  
[conted.colorado.edu/online-credit](http://conted.colorado.edu/online-credit)

## APPLIED MUSIC

### APPLIED MUSIC PROGRAM

The Applied Music Program allows students to earn 2 hours of CU credit while receiving private or group music lessons. All Applied Music instructors are professional musicians and experienced teachers in the CU-Boulder College of Music. Students must furnish their own instruments, except piano and drum set. Styles include classical, jazz, and rock.

#### GROUP CLASSES INCLUDE:

- Guitar
- Piano
- Hand Drum Circle

#### PRIVATE (ONE-ON-ONE) INSTRUCTION IS AVAILABLE ON:

- Guitar
- Piano
- Voice
- Percussion
- Mandolin
- Banjo
- Harp
- Winds
- Brass
- Strings

#### Tuition

\$652 for 2 credit hours.

*Nonresident students taking four (4) or more credit hours through Continuing Education may be subject to out-of-state tuition assessment.*

Learn more at [conted.colorado.edu/applied-music](http://conted.colorado.edu/applied-music), email the applied music advisor at [appmusic@colorado.edu](mailto:appmusic@colorado.edu), or call 303-492-5950.

### Youth Piano Program

In cooperation with the CU-Boulder College of Music, private lessons are available for ages 9-17 or younger students with some training. Students will learn from experienced instructors from the College of Music. Visit [conted.colorado.edu/youth-piano](http://conted.colorado.edu/youth-piano) for complete information.



Leslie Heinzen,  
Applied Music

## SPEECH, LANGUAGE, AND HEARING SCIENCES

### SPEECH, LANGUAGE, AND HEARING SCIENCES ONLINE PROGRAMS

Offered in cooperation with the CU-Boulder Department of Speech, Language, and Hearing Sciences, Continuing Education is pleased to bring you the following online programs.

#### Speech-Language Pathology Prerequisites (SLPP) Program

This online program is designed to prepare individuals who have a BA/BS degree to complete the SLHS prerequisites necessary to apply to Speech-Language Pathology Assistant (SLPA) Certification Programs or Graduate Speech-Language Pathology (MA-SLP) Programs. Course work supports individuals in a career path to address the continuing shortage of qualified personnel to work with students with communication, language, and learning challenges in our public schools.

For additional information visit [slhs.colorado.edu/slpp-online](http://slhs.colorado.edu/slpp-online) or contact the SLPP Program Coordinator at [slpp@colorado.edu](mailto:slpp@colorado.edu) with any questions about the program or application process.

#### Speech Language Pathology Assistant Certificate Program

Speech language pathology assistants (SPLAs) who want to work in public schools in the state of Colorado must meet specific requirements for authorization. The Speech Language Pathology Certificate allows recipients to meet these requirements. Students also develop the knowledge and skills to work under the supervision of a Master's Level SLP.

This professional certificate program is offered in cooperation with the CU-Boulder Department of Speech, Language, and Hearing Sciences. The certificate is appropriate for individuals in their senior year of their undergraduate program, or individuals who have completed a bachelor's in speech pathology and audiology. Interested students should visit [slhs.colorado.edu/slpa-certificate-program](http://slhs.colorado.edu/slpa-certificate-program) for information on applying.

Because these courses are offered online, they are available to individuals who live outside the CU-Boulder area and to working people who can complete the professional certificate while maintaining employment.

## ADDITIONAL CREDIT PROGRAMS

### ACCESS Program

#### (Available Credit Courses for Eligible Special Students)

Enroll in daytime credit classes at the University of Colorado Boulder for personal or professional development through the ACCESS Program. Nondegree students may take main campus undergraduate or graduate courses after most degree-seeking students have enrolled. ACCESS is an opportunity to learn about CU-Boulder and the academic departments, meet the faculty, and earn credit.

We are accepting applications for the spring 2015 semester. Enrollment begins Friday, January 9, and classes begin Monday, January 12. Call 303-492-5148 for more information or visit [conted.colorado.edu/access](http://conted.colorado.edu/access).

Our capable staff can provide academic advising, financial aid, and career advising through in-person or telephone appointments. Visit [conted.colorado.edu/resources](http://conted.colorado.edu/resources) to set up a free appointment.

ACCESS students who are Colorado residents taking undergraduate or a combination of undergraduate and graduate classes may be eligible for the College Opportunity Fund (COF). For more information visit [cof.college-assist.org](http://cof.college-assist.org).

### High School Concurrent Program

If you are a high school student interested in the challenge of university course work, you may enroll in credit courses at the University of Colorado Boulder through the High School Concurrent Program. You will earn university credit that may also be applied toward high school graduation requirements. Participation in the High School Concurrent Program requires written permission from your high school counselor and a parent/guardian.

If you are a high school junior or senior attending a public high school, you may be eligible for tuition assistance from your school district during the fall and spring semesters. You must notify your counselor of your intent to enroll at least two months prior to the beginning of the term. Call 303-735-5456 for an application and more information or visit [conted.colorado.edu/high-school](http://conted.colorado.edu/high-school).

High School Concurrent students enrolled in ACCESS courses are eligible to apply for the College Opportunity Fund. Visit [cof.college-assist.org](http://cof.college-assist.org) for more information.

### Individualized Instruction

For special cases when a student needs a course that is unavailable. Talk to your advisor or call 303-492-5148 for more information.

### Finishing Your Degree at CU

Completing a degree is a very unique experience for each person. Whether you began your degree at CU years ago, or are hoping to complete a degree started elsewhere, we have a friendly staff who understands the challenges of balancing school, work, family...life. Let our academic advisors help you create a plan to meet your needs, making the most of the abundant programs and resources that the university has to offer. Schedule an in-person or telephone appointment at [conted.colorado.edu/resources](http://conted.colorado.edu/resources) to discuss your options.

Learn more about the CU Complete Service for former CU-Boulder students on page 9.

#### Isela Lopez

Intro to Statistics

**“This was the last class I needed to graduate from Environmental Design. Taking it through Continuing Education was great and I wish I would have known about it earlier. It was a great class and I especially liked having a night class only twice a week. The pace kept me motivated and focused.”**



## POST-BACCALAUREATE HEALTH PROFESSIONS PROGRAM

**Jeremy Graham Salter**

**“Everyone in my family is in medicine; my parents are physicians and my sister is an EMT. I tried not to follow their paths, but after a physics and mathematics degree, and a year of PhD work in applied mathematics, I realized that wasn’t my calling. After a couple years of very rewarding work with hospice patients and families, I now know that I want to dedicate my mind to medicine so that I can truly help people who are at a critical place in their life.”**



### WHERE TO BEGIN YOUR NEXT CAREER

The Post-Baccalaureate Health Professions Program is designed for “career changers” who were academically successful as undergraduates and have completed a bachelor’s degree, but have not completed the prerequisite courses necessary to apply to graduate medical programs. This intensive yearlong post-baccalaureate program (one summer, followed by a fall semester and a spring semester) is appropriate for students who are either recent college graduates or experienced professionals seeking a career change. The 2015 program begins in late May, and classes begin June 1, and provides the course work and support necessary to apply to graduate medical programs in 2016.

Applications for the 2015 class will be accepted on a rolling basis beginning in October, 2014.

**This program is designed for students who have:**

- a strong academic undergraduate record with a bachelor’s degree in a non-science field. Most applicants will have a grade point average of 3.3 or above.
- completed college algebra and trigonometry, or the equivalent.
- an informed understanding of the health profession they seek to enter based on extensive and meaningful clinical experience in a healthcare setting such as shadowing medical professionals, volunteering with patients, or employment in a healthcare field.

We offer you the opportunity to gain a sound foundation in the science classes necessary to apply for graduate medical studies. Students receive individual advising, tutoring, application assistance, and special programming. Here are the courses provided in the program:

#### **Summer**

- General Chemistry 1 with Lab
- General Chemistry 2 with Lab

#### **Fall**

- Introduction to Cellular and Molecular Biology with Lab
- Organic Chemistry 1 with Lab
- General Physics 1 with Lab

#### **Spring**

- Principles of Genetics with Lab
- Biochemistry
- General Physics 2 with Lab

An optional second summer term with anatomy, physiology, and/or organic chemistry 2 courses is available.

Visit [premed.colorado.edu](http://premed.colorado.edu) for more information or email [postbacmd@colorado.edu](mailto:postbacmd@colorado.edu).

## SUMMER SESSION



### LOOK AHEAD TO SUMMER!

**Summer Session 2015 offers you the opportunity to earn academic credit, satisfy your curiosity, meet major or minor requirements, and be part of our summer community. Many of CU's most popular and sought-after courses are offered. The diverse population of students from CU and institutions across the country, high school students, and teachers and other professionals makes Summer Session a unique learning experience.**

**We also welcome international students to be part of summer in Boulder. Email [ceadvise@colorado.edu](mailto:ceadvise@colorado.edu) for more information.**

#### Special offerings during Summer Session include:

##### Faculty-in-Residence Summer Term (FIRST)

Learn from prestigious, world-class faculty that teach on the Boulder campus during summer session. These renowned scholars bring a wealth of experience, knowledge, and perspective to the classroom that will challenge and inspire your thinking. Take advantage of the incredible opportunity FIRST brings to you.

##### Maymester or Augmester 3 weeks. 3 credits.

Accelerate your academic career with the intensive, single-course focus of Maymester and Augmester. You will be immersed into an interactive environment where you can complete a core or major requirement in just three weeks. Gain knowledge and momentum by concentrating on a Maymester or Augmester course.

##### Featured Classes

Explore the possibilities with new course offerings and classes that move you forward

and into new areas. Summer Session offers greater flexibility and smaller class sizes to make the learning process that much more engaging. Check out Featured Classes and find one that's right for you.

##### Online Classes

Get even more out of Summer Session with our online course program. Engage with your instructors and classmates in innovative ways, such as discussion groups, message boards, and video lectures. The classes are rigorous yet the schedule is flexible, so you can learn on your terms.

Visit [www.colorado.edu/summer](http://www.colorado.edu/summer) for additional information or to request a copy of the 2015 catalog.

##### Summer 2015 Schedule

Session M (Maymester):	May 11-29
Session A (5 weeks):	June 1-July 2
Session B (5 weeks):	July 7-August 7
Session C (8 weeks):	June 1-July 24
Session D (10 weeks):	June 1-August 7
Session G (Augmester):	August 3-20

## CU ON THE WEEKEND

### CU ON THE WEEKEND – SPRING 2015

**CU on the Weekend is a series of one-day classes led by some of CU-Boulder's best faculty. Join faculty for programs that are free, open to the public, and designed to satisfy the community's curiosity surrounding some of the intriguing research conducted at CU-Boulder. This spring we will feature some of CU-Boulder's leading researchers on climate and healthy aging.**

#### **Polar Ice in a Changing Climate: From Hot Air to Cool Science**

Saturday, Feb. 7, 1-3 pm  
Benson Earth Sciences – Room 180

*Waleed Abdalati, Professor of Geography and Director for the Cooperative Institute for Research in Environmental Sciences (CIRES)*

#### **Healthy Aging Series Session 1**

Saturday, Feb. 28, 1-3 pm  
Benson Earth Sciences – Room 180

*Aging in Colorado: Achieving Optimal Longevity  
Douglas Seals, Professor of Integrative Physiology and Director of the Integrative Physiology of Aging Laboratory*

*You're Only as Old as Your Arteries  
Thomas LaRocca, Instructor of Integrative Physiology*

#### **Healthy Aging Series Session 2**

Saturday, March 14, 1-3 pm  
Benson Earth Sciences – Room 180

*Sleep and Health  
Kenneth Wright, Associate Professor of Integrative Physiology*

#### **Healthy Aging Series Session 3**

Saturday, April 18, 1-3 pm  
Benson Earth Sciences – Room 180

*How Does Aging Impair Walking Ability and What Can We Do About It?  
Rodger Kram, Associate Professor of Integrative Physiology*

*Movement, Aging, and the Brain = Risky Business!  
Alaa Ahmed, Assistant Professor of Integrative Physiology*

#### **South Denver Programs**

CU on the Weekend has expanded to offer programs in Douglas County at the new CU South Denver Liniger Building, located at The Wildlife Experience facility. Visit [conted.colorado.edu/weekend](http://conted.colorado.edu/weekend) for more information.

#### **Free and Open to the Public**

Registration is not necessary for CU on the Weekend programs. Seating is available on a first-come, first-served basis. Classrooms open 30 minutes before start time.

#### **Stay Informed**

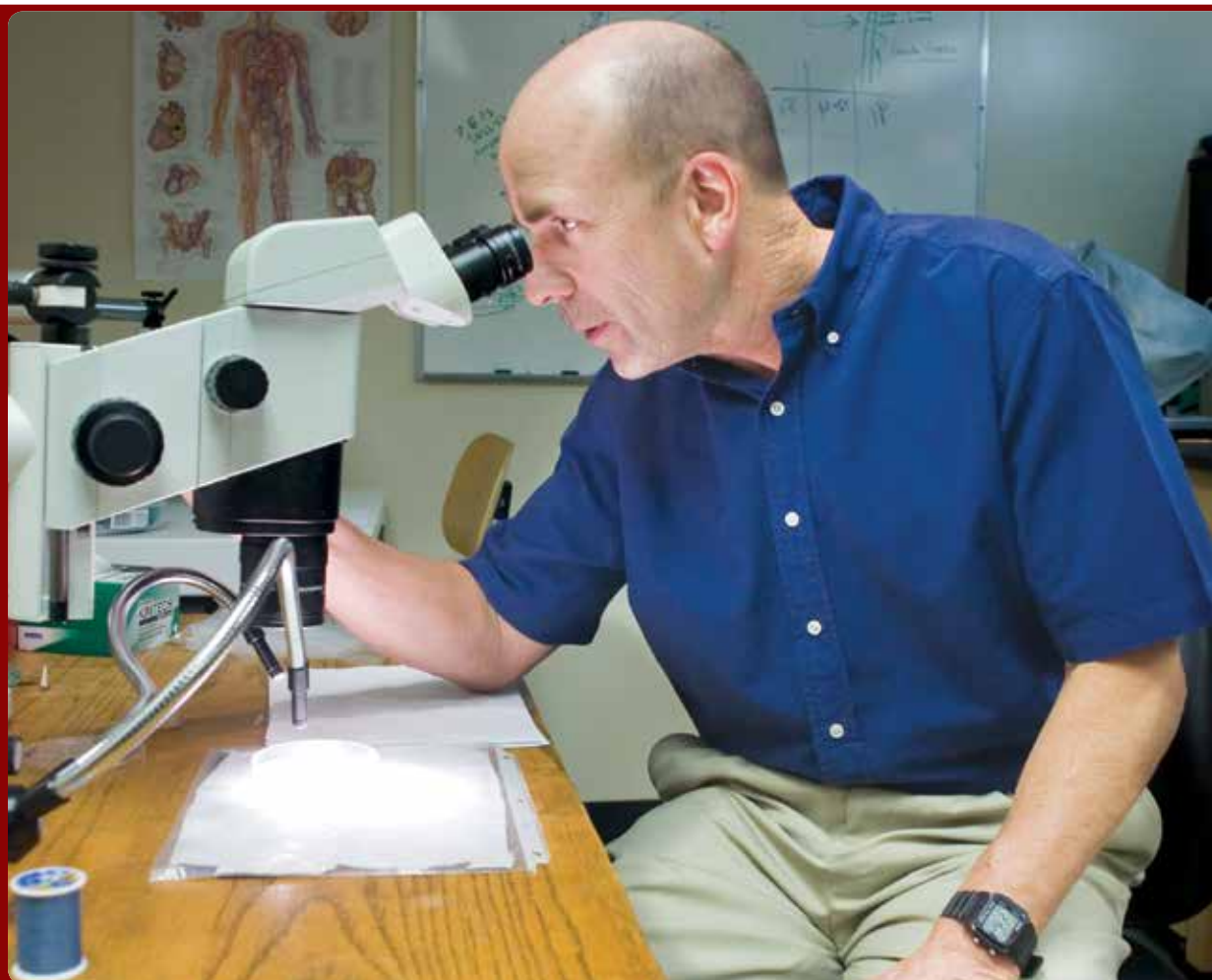
Sign up for emailed event reminders for one or more classes via the CU on the Weekend webpage. All programs are subject to change. The CU on the Weekend webpage is the primary source for the most up-to-date instructor bios, class descriptions, parking information, and more.

For a complete schedule of CU on the Weekend spring programs visit [conted.colorado.edu/weekend](http://conted.colorado.edu/weekend).

#### **Doug Seals**

Healthy Aging

**“Views of aging recently have been transformed as the focus shifted from increasing lifespan to improving healthspan. All aspects of aging were thought to be very inflexible and inevitable, but we've found that aging can be modified by all kinds of factors. While different strategies can be used to expand lifespan, the number of years you live, the focus in our area of study has shifted more to improving healthspan, the number of years you live with good health and function. Increasing healthspan markedly increases quality of life and reduces health care costs.”**



International English Center  
**NICK EINTERZ**

“Students really benefit from having a  
**MAJOR GOAL**  
that stands apart from simply completing a class.”

“When students from a variety of cultures work together toward a shared goal, they naturally find commonalities and realize that they are not all that different to begin with,” says Nick, who has pioneered a project-based curriculum grounded in the gamification of learning. “When you add technology to this idea, students who are going into STEM fields gain the opportunity to stand apart and have a sense that they are accomplishing something in their area of study.”

### **1030 13TH STREET ON “THE HILL.”**

**Since 1975, the International English Center (IEC) has helped over 20,000 international students learn and master English. Our students go on to attend the University of Colorado, Colorado School of Mines, the University of Denver, Colorado State University, and dozens of other institutions. The children of our former students are now IEC students – we are multi-generational! The IEC offers two English as a Second Language (ESL) programs for international students, community residents, or interested visitors from other countries.**

#### **About the International English Center (IEC)**

The International English Center offers a safe, nurturing, and dynamic environment where students take academically challenging course work in writing, reading, listening, and speaking. Grammar and vocabulary are incorporated into all classes, enabling students to develop their English language skills efficiently. Students also choose an elective course, which best meets their needs and interests. Electives include such

topics as: business English, test preparation, pronunciation, academic vocabulary, sports and nutrition, life skills, and volunteering. Additionally, the IEC provides workshops on U.S. higher education, a culture hour, reading club, tutoring center, and many other cultural, community, and sports activities. Students gain confidence as they experience the beauty of Boulder and Colorado.

Students have access to university libraries with a rich source of educational and research materials along with two computer

labs at the IEC. Students at the IEC have many opportunities to participate in activities on campus, including conversation groups, lectures, performances, and other University of Colorado Boulder events.

All IEC faculty members have master’s degrees and extensive teaching experience in academic English language programs. They also use the most current language learning methodology and materials.

The International English Center is fully accredited by the Commission on English Language Program Accreditation (CEA). We are also a member of UCIEP (Consortium of University and College Intensive English Programs) as well as EnglishUSA (formally, the American Association of Intensive English Programs).

#### **Intensive English Program (IEP)**

This program is especially designed for international students who are preparing to enter a university or graduate program in the U.S. It is also appropriate for working professionals and community members who want to improve their academic or professional



## INTERNATIONAL ENGLISH CENTER



English. The IEP consists of five eight-week sessions of full-time English language study (20 hours per week). Students participate in writing, reading, listening, and speaking, and elective courses. New students take a placement test, which determines their level. There are eight levels in the program: Introductory, Basic 1, Basic 2, Intermediate 1, Intermediate 2, Intermediate 3, Advanced 1, and Advanced 2. Class size is 12-15 students on average.

With permission of the director, advanced-level students may be eligible to enroll in University of Colorado Boulder classes.


A limited number of scholarships are available for immigrants and refugees who demonstrate financial need. For more information about scholarships, please visit [iec.colorado.edu](http://iec.colorado.edu).

Certificates of completion are offered.

### English as a Second Language for Degree Students (ESLG)

The IEC offers non-intensive credit courses in accent reduction, academic writing, and presentation skills, designed for undergraduate and graduate students who need to improve specific areas in their English language proficiency. Nondegree students may enroll if they demonstrate an appropriate level of English proficiency. An English language placement test is administered every fall and spring semester. Course advisement and recommendations are based on students' test results.

For more information on any of these programs, please visit [iec.colorado.edu](http://iec.colorado.edu) or call 303-492-5547.



**Let's get connected.**

Course descriptions and enrollment information at [conted.colorado.edu](http://conted.colorado.edu)

Girls in STEM: Math!

TESS EIDEM

“With Science Discovery, I am able to  
**STEP OUT**  
and engage the public in the world of science.”

“I am used to interacting with other scientists, so working with younger people was a change of pace and lot of fun,” says Tess. “In the girl’s math class I taught, it was really fulfilling to see how quickly my students picked up the concepts and got excited about learning. It’s important to me to get people, especially women and girls, excited about science and math.”

### ABOUT SCIENCE DISCOVERY

**CU Science Discovery, established in 1983, collaborates with CU-Boulder faculty to develop and deliver science education programs for K-12 students and teachers. Our mission is to heighten interest and increase literacy in science, technology, engineering, and math (STEM) by providing hands-on experiences that connect students and teachers to current CU science. We capitalize on CU-Boulder’s scientific resources, facilities, and expertise to excite students about STEM, expose them to a variety of STEM careers and professionals, and inspire a future generation of scientists and engineers. Through our programs, we impact more than 20,000 students and teachers across Colorado each year.**

#### Summer Camps and After-School Classes

For students ages 5-18, CU Science Discovery offers a wide variety of summer camps and after-school classes that span the STEM disciplines. Camps and classes offer enthusiastic and knowledgeable instructors (often STEM graduate students with teaching experience), access to university and community resources, small class sizes

(10-16 students), and a variety of laboratory and field experiences. Camps such as Maker Space, Visual-Matics, and Reverse Engineering are designed to enrich student understanding and motivate them to explore science topics in greater depth. Advanced workshops, such as Flow Visualization, Science Journalism, Microbiology, and Medical Research Matters, offer opportunities for high school students to learn more

about STEM majors and career opportunities. From engineering to programming to physics, our Camp Program offers something for everyone! For a complete listing of current camps and classes, please visit our website.

#### Classroom Presentations

Science Discovery brings CU’s cutting-edge science and scientists to classrooms, libraries, and community centers throughout Colorado. The program collaborates with CU faculty, peer institutions, and other educational organizations to enrich STEM education statewide. Our interactive presentations and hands-on workshops introduce students to subjects across the STEM disciplines, including chemistry, physiology, and optics. Current offerings include several new programs in genetics, physical science, sustainability, engineering, and biotechnology. Each program’s content and activities support the Colorado Academic Standards and enrich student learning through fun, hands-on experiences.

## SCIENCE DISCOVERY



### STEM Workshops and Teacher Professional Development

Full-day STEM Workshops, offered on the CU campus and at school sites around the state, provide a more extended experience for elementary and middle school teachers and students. Teachers and students rotate through three different hands-on workshop modules, giving teachers the opportunity to participate in workshop activities alongside their students. STEM Workshops and related Teacher Professional Development Workshops focus on topics such as engineering, renewable energy, life science, and earth systems science. CU Science Discovery conducts STEM Workshops and Teacher Professional Development Workshops at urban and rural sites throughout Colorado. Contact us to bring a STEM Workshop to your community!

### Field Science Programs

CU Science Discovery provides a variety of opportunities for students and teachers to participate in hands-on science while exploring the great outdoors. Throughout the school year, we offer field study programs that explore Colorado's ecosystems, such as Stream Ecology and Winter Ecology on Snowshoes. Our Mountain Research Experience, offered in collaboration with CU's Department of Ecology and Evolutionary Biology and INSTAAR, provides high school students and teachers the opportunity to conduct ecological field research while living and working at CU's Mountain Research Station. Our field programs provide teachers and students with opportunities to dig in and experience field science research firsthand. For more information about our programs and current offerings, visit [sciencediscovery.colorado.edu](http://sciencediscovery.colorado.edu) or call 303-492-7188.

### Girls in STEM

CU Science Discovery is working to advance gender equity in STEM by serving as the convening organization for the Colorado Collaborative for Girls in STEM, a statewide affiliate of the NSF-funded National Girls Collaborative Project. In this role, we help to coordinate activities across the state designed to build capacity among STEM education providers and school counselors, and promote greater opportunities for girls and women in STEM.

### CU Science Discovery Teen Café

Our Teen Café offers Boulder and Denver area teens an opportunity to meet and interact with local scientists in a fun and informal setting. The Teen Science Café meets monthly at each of two locations, one in Boulder and the other in Denver. Café topics span a wide range of STEM fields – from ecology and medicine to astrophysics and 3D printing! Topics and presenters are identified by our Youth Leadership Team, who help us guide the program and run café events. For information about upcoming events or to get involved, please visit our website.

Boulder County Latino History Project  
MARJORIE McINTOSH

“With a few small exceptions, Latinos are virtually invisible in the standard

# HISTORIES

of Boulder County.”

“For me, it’s a moral issue. What we know about the past should be about everybody,” says Marjorie McIntosh, CU-Boulder professor emerita of history. “We want (the Boulder County Latino History Project) to document the struggles and the way so many people succeeded despite those struggles. We want to make very clear the contributions Latinos have made in Boulder County.”

## BRINGING LATINO HISTORY TO SCHOOLS

**The Boulder County Latino History Project brings together CU-Boulder faculty, community leaders, educators, and local youth to properly record and share the virtually untold history of Latinos in Boulder County. Project leaders and volunteers have gathered historical artifacts detailing Latino history, culture, and influences over the past 100 years, and those findings are now being incorporated into local classrooms.**

Marjorie McIntosh, professor emerita of history, was shocked to discover the lack of Latino inclusion in the prevailing histories of Boulder County. Furthermore, she worried that Latino history was a missing chapter in local schools’ history lessons and in American history classrooms nationwide.

“With a few small exceptions, Latinos are virtually invisible in the standard histories of Boulder County,” she said. “For me, it’s a moral issue. What we know about the past should be about everybody.”

“We want (the Boulder County Latino History Project) to document the struggles

and the way so many people succeeded despite those struggles. We want to make very clear the contributions Latinos have made in Boulder County.”

Buoyed by a passion to make it right, McIntosh partnered with Latino groups, historical organizations, and dedicated volunteers to launch the Boulder County Latino History Project in 2013. The focus of the grassroots initiative is to describe and record the history, culture, and contributions of Latinos in Boulder County over the past century.

In its early stages, project volunteers and high school and college student interns gathered oral, written, and photographic information about the experiences of Latinos. Their research turned up community lore and newspaper accounts detailing compelling stories about college-student protests, obstinate war veterans, the demise of discriminatory ordinances, and even a near-lynching.

Project volunteers and interns have digitalized countless artifacts to form one of the country’s most comprehensive multimedia collection of local Latino history to date. The collection is now accessible on the project website, **bocolatinohistory.colorado.edu**, and McIntosh is writing a book about the project’s findings.

Now in its second phase with support from a CU-Boulder Outreach Award, the Boulder County Latino History Project has begun to focus on sharing its materials with K-12 educators.

Kent Willman, former St. Vrain Valley School District social studies teacher and instructor in the CU-Boulder School of Education, and Leonora Velasquez, former Boulder

## OUTREACH



Valley School District principal and administrator, are co-directors of the project's K-12 efforts. The goal is to help teachers from all grade levels in the Boulder Valley and St. Vrain Valley School Districts learn about the history of local Latinos and explore the project's collection of primary sources.

The project hosted a pilot interdisciplinary workshop for K-12 teachers this summer, and the participants will introduce Boulder County Latino history into their existing curriculum during the school year. CU-Boulder faculty and students in education, history, and ethnic studies are serving as a continuous resource for the teachers as they develop, test, and refine teaching materials that utilize the project's rich historical sources.

Isabel Chavez-McBeth is a third grade teacher in the St. Vrain Valley School District who attended the summer workshop. Fortunately, the workshop was well-timed to help with her search for Latino history to include in her classroom materials.

"I was planning to incorporate local history into my class, but I struggled to find the history in books," she said. "Now I plan to use primary sources from the Longmont Museum in my lessons.

"I've learned a lot from the resources they have provided, too. It's important to look at the struggles Latinos have been through and how they have contributed to the community. It's important for Latino students to have strong role models."

Project leaders will continue to work with teachers like Chavez-McBeth as the teachers develop their materials and integrate them into their classrooms. Moving forward, project leaders aim to expand the project to include more teachers throughout the districts, and they hope the effort could serve as a model for other communities.

For more information or to search the project's historical collections, visit [bocolatinohistory.colorado.edu](http://bocolatinohistory.colorado.edu).

### About Outreach at CU-Boulder

Extending educational opportunities to the citizens of Colorado is a vital part of the university as well as the mission of Continuing Education. The Division is home of the Office for Outreach and Engagement, which supports campus-wide outreach efforts and connects the university's research, teaching, and creative resources with communities throughout Colorado and the world.

The office also administers the CU-Boulder Outreach Awards, which funds outreach projects that engage faculty in mutually beneficial partnerships with external constituents. These awards are made possible by funds from the Office of the Chancellor, the Office of the Provost, and Continuing Education. For more information about the Office for Outreach and Engagement and its programs, visit [outreach.colorado.edu](http://outreach.colorado.edu) or email [outreach@colorado.edu](mailto:outreach@colorado.edu).



**Jared Martin**

Enrollment Services Specialist

**“We work with a very diversified student population; no two Continuing Education students are the same. It’s interesting to learn a student’s story and help them find the course they need to finish their degree or otherwise achieve their goals. I enjoy being able to help students find the information they need and make the whole process easier for them.”**

**YOU’VE GOT QUESTIONS. WE’VE GOT ANSWERS.**

Lifelong learning doesn’t mean putting your job, family, or life on hold – and no one understands that better than the staff at Continuing Education. We can help you sort through your academic options, identify financial aid resources, prepare for a career, and more. Visit [conted.colorado.edu/resources](http://conted.colorado.edu/resources) to learn more or to schedule an appointment with an advisor.

**GETTING STARTED**

**Academic Advising**

Our academic advisors can help you understand the university options and choose the best course of action. You will find helpful hints for preparing for your appointment at [conted.colorado.edu/resources/academic-advising](http://conted.colorado.edu/resources/academic-advising).

**Financial Assistance**

Our financial aid advisor can help you determine if there are funds available to help you meet your educational goals. Visit [www.colorado.edu/finaid/continuinged.html](http://www.colorado.edu/finaid/continuinged.html) for more information.

Nondegree students age 22 or older are eligible to apply for one of several Nontraditional Student Scholarships awarded each semester. An application and complete information including eligibility, requirements, and deadlines are available at [conted.colorado.edu/resources/financial-aid](http://conted.colorado.edu/resources/financial-aid).

**Career Services**

Our career advisor is available for comprehensive career counseling including career exploration and planning, job search assistance, and other career-related guidance. Nondegree students are eligible for eight individual career advising sessions each term they are enrolled. To schedule an appointment or for more information, visit [conted.colorado.edu/resources/career-advising](http://conted.colorado.edu/resources/career-advising).

**CAREER EXPLORATION WORKSHOP**

**CSVC 1010**

Want to discover a career passion? Begin to identify who you are through your interests, values, skills, and personality type, in addition to exploring how this information relates to a career. We will integrate various methods for self-assessment and tracking career passions. This hands-on class will assist you in finding a career direction that will bring satisfaction, whether you are making a career change, contemplating post-retirement options, or just beginning to enter the job market. After the class, you will also have access to individual sessions with the Continuing Education career advisor.

Dahlia Smith, LCSW, is the Career Advisor at Continuing Education. She has been counseling job seekers and changers for over 15 years.

Fridays, April 3-May 8, 11 am-1 pm.  
Location: TBA. \$190.

**ENROLLING IN UNIVERSITY CREDIT COURSES**

If you would like to enroll in courses for University credit answer these questions to determine your next step.

**Are you new to CU, or has it been more than 12 months since you enrolled in a course?**

If yes, then please complete and submit the online Continuing Education Application at [conted.colorado.edu/enroll](http://conted.colorado.edu/enroll). We will process your application and send you an Invitation to Enroll, complete with all of the information you will need to enroll in courses using MyCUInfo.

**Have you been enrolled in a CU course within the past 12 months?**

If yes, give us a call at 303-492-5148 and we can activate your term record. You will then be able to enroll online via MyCUInfo at [mycuinfo.colorado.edu](http://mycuinfo.colorado.edu).

**PAYING**

Continuing Education offers a full service bursar/accounting office. You can pay your tuition by check, cash, credit card (VISA, MasterCard, Discover, and American Express), or online from your checking or savings account. Please note that payments made to the University of Colorado using a credit or debit card will be charged an additional nonrefundable 2.75% service fee by the card processor. Credit students can also pay using a credit card online at [mycuinfo.colorado.edu](http://mycuinfo.colorado.edu). Visit [conted.colorado.edu/resources](http://conted.colorado.edu/resources) for more information.

If you need confirmation of enrollment and payment of tuition for employer reimbursement, please contact us at 303-492-2212 or by email at [cebursar@colorado.edu](mailto:cebursar@colorado.edu).

## STUDENT SERVICES

### ADDITIONAL INFORMATION

#### Course Updates

Occasionally information printed in this catalog changes. We encourage you to verify your course information such as course locations, cancellations, etc. before traveling to campus for your class. You will find the most up-to-date information at [conted.colorado.edu](http://conted.colorado.edu).

We try to notify enrolled students of course changes by email and telephone. We therefore encourage you to let us know if your contact information changes.

#### Student Privacy

You may elect to have directory information withheld about yourself. Please call or visit our office to receive the required form.

#### Security Phrase

CU-Boulder is committed to protecting your educational record by limiting disclosure of your personal (non-directory) information. If you wish to access your personal information over the phone or in person without your photo ID, you must speak your security phrase to confirm your identity. If you have not yet set a security phrase in MyCUInfo, university staff will ask you to create a phrase before calling back or receiving information regarding your education record in person without a photo identification.

To set your security phrase, log in to MyCUInfo and click on the Student tab. Under the Academic Resources section, click on Set Security Phrase. Phrases can contain up to 50 Latin characters (no numbers or symbols), should be easily remembered but difficult to guess, and cannot contain lewd, intimidating, abusive, or threatening language. Such language is in violation of the university's Student Conduct Code and will be referred to the Office of Student Conduct.

#### Disability Services

If you are a student with a disability, Disability Services can provide you with the tools, accommodations, and support services to engage fully in the academic environment. Visit [disabilityservices.colorado.edu](http://disabilityservices.colorado.edu) for more information.

#### Accessing Campus Services

As a Continuing Education student, you may be eligible to use the campus libraries and computer labs at no cost. To gain access to these campus services, please obtain a "no fees paid" sticker (available at the Continuing Education cashier's window) and bring the sticker and a photo ID with you when you plan to use the libraries or computer labs. You can also purchase a student ID, the Buff OneCard, for \$30 at the Buff OneCard office in the Center for Community, room N180, by presenting a copy of your student schedule and photo ID. Visit [www.BuffOneCard.com](http://www.BuffOneCard.com) for more information.

#### Severe Weather

Classes are held when scheduled. Campus closings are announced on local radio and television stations along with the CU website at [www.colorado.edu](http://www.colorado.edu). You will also find cancellations on Facebook ([facebook.com/CUContinuingEd](https://facebook.com/CUContinuingEd)) and Twitter (@CUContinuingEd).

#### Books and Supplies

Required course materials are available at the CU Book Store in the basement of the University Memorial Center on campus. Call 303-492-6411 or visit [www.cubookstore.com](http://www.cubookstore.com).

### FAQS

#### How much will my course cost?

Costs vary depending on the course. For the Career Exploration Workshop, you will find the cost at the end of the course listing. For Boulder Evening, tuition is different for Colorado residents and nonresidents. Independent Learning tuition is different depending on whether the course is undergraduate or graduate level. Information on tuition and residency can be found at [conted.colorado.edu/tuition](http://conted.colorado.edu/tuition).

Continuing Education tuition is charged separate from and in addition to other CU tuition. All tuition and refund determinations are subject to audit.

#### Where do I get a record of my classes?

If you need a record of your academic credit courses, request a transcript through MyCUInfo at [mycuinfo.colorado.edu](http://mycuinfo.colorado.edu). You can also visit the CU registrar's website at [www.colorado.edu/registrar](http://www.colorado.edu/registrar) for other options.

For a record of your noncredit courses, email our enrollment services office at [ceregistration@colorado.edu](mailto:ceregistration@colorado.edu) or call 303-492-5148.

#### Where is my class? Is there parking nearby?

Course locations are listed at the end of each course description. Many campus parking lots offer \$4.00 parking after 5 pm and on Saturdays. Some are free during evenings and weekends. The Campus Map at [www.colorado.edu/campusmap](http://www.colorado.edu/campusmap) gives both building and evening and weekend parking lot locations. To skip parking altogether, take the bus to campus.

#### What if my plans change and I have to drop my class?

Please let us know. Depending on when you drop a course, you may receive a full refund. Refer to each program description for refund policies after a course begins.

Please note: Nonattendance does not constitute withdrawal and you may still be charged for your courses unless you officially withdraw before the drop deadline.

Call us at 303-492-5148 or 800-331-2801 (TTY 303-492-8905) if you need any help or for additional information visit [conted.colorado.edu](http://conted.colorado.edu).

#### Building Hours/Closures

Our office hours are 8 am to 5 pm Monday through Friday. CU-Boulder will be closed Thursday and Friday, November 27 and 28; Wednesday and Thursday, December 24 and 25; Thursday, January 1; Monday, January 19; and Friday, March 27.



#### Discounts Available

For more information visit [conted.colorado.edu/resources/discounts](http://conted.colorado.edu/resources/discounts)

At the University of Colorado Boulder we are committed to building a campus community in which diversity is a fundamental value. People are different and the differences among us are what we call diversity—a natural and enriching hallmark of life. Diversity includes, but is not limited to, ethnicity, race, gender, age, class, sexual orientation, religion, disability, political viewpoints, veteran status, gender identity/expression, and health status. A climate of healthy diversity is one in which people value individual and group differences, respect the perspectives of others, and communicate openly.

Diversity is a key to inclusive excellence in education. A diverse learning environment better prepares all students for the world that awaits them. CU-Boulder is committed to enriching the lives of our students, faculty, and staff by providing a diverse campus where the exchange of ideas, knowledge, and perspectives is an active part of learning.

—from the Guidelines for Diversity Planning

The University of Colorado Boulder does not discriminate on the basis of race, color, national origin, sex, pregnancy, age, disability, creed, religion, sexual orientation, gender identity, gender expression, or veteran

status, political affiliation, or political philosophy in admission and access to, and treatment and employment in, its educational programs and activities. The university takes affirmative action to increase ethnic, cultural, and gender diversity, to employ qualified disabled individuals, and to provide equal opportunity to all students and employees.

University of Colorado Boulder Catalog (USPS 651-060). 1505 University Avenue, 178 UCB, Boulder, CO 80309-0178. Volume 2014, No. 4, October/November. Published four times a year: January, March, June/July, and October/November. Periodicals postage paid at Boulder, Colorado, and additional mailing offices. POSTMASTER: Send address changes to the University of Colorado Boulder Catalog, Continuing Education, University of Colorado Boulder, 178 UCB, Boulder, CO 80309-0178.

Continuing Education is part of the Colorado Statewide Extended Campus, [higher.ed.colorado.gov/academics/ExtendedStudies](http://higher.ed.colorado.gov/academics/ExtendedStudies). This publication was printed and mailed using funds generated solely by Continuing Education programs. Continuing Education regrets any printing errors, but accepts no liability for them.

Design: Vermilion. Printing: Vision Graphics. Cover and Summer Session photos courtesy of the University Photographers.

**Division of Continuing Education**  
1505 University Avenue  
University of Colorado Boulder  
178 UCB  
Boulder, CO 80309-0178  
[conted.colorado.edu](http://conted.colorado.edu)



Printed on Forest Stewardship Council paper ensuring the highest standards of environmental and social responsibility. Share your catalog with friends, and recycle all appropriate materials. Thank you.

12019170



## GATEWAY TO POSSIBILITY

The Division of Continuing Education serves as a gateway between students and the CU-Boulder campus. Undergraduate students can find classes that fit their schedule through Boulder Evening or Independent Learning with self-paced and term-based online courses. Local residents can explore their passion, discover a new one, or finish their degree through CU Complete. CU Continuing Education makes almost any pursuit possible.

